



**BERKSHIRE
COMMUNITY
FOUNDATION**

25th
Anniversary

Registered Charity No: 294220

2009/2010 Annual Review



Berkshire Community Foundation is a local, independent grant making charity.

Our **vision** is to inspire local giving to change lives.

Our **purpose** is to promote and support local giving for social good, benefit or change in Berkshire.

Our **aims** are to build stronger communities and enrich lives through giving grants, to help local people and businesses to manage their charitable giving, and to influence critical issues affecting our communities.

Contents

Summary & Highlights	1
Chairman's Message	3
Community Needs	8
Giving Through the Foundation	10
Funds with the Foundation	11
Summary Accounts	15
Supporter Thank You	18

Our Values

Knowledgeable *understanding local issues*

Inclusive *accessible and welcoming to all*

Creative *prepared to back new ventures*

Advocating *action on important local issues*

Unifying *bringing people together to find better solutions*

Sustainable *making a long-term commitment to our communities*

During 2009/2010, the Foundation **awarded over £562,205** to 285 groups and 24 individual children.

Applying our **in depth knowledge of the local community**, we award grants to a wide range of projects; targeting the funding to have **the greatest impact** and finding solutions that genuinely help to meet need.

We provide a **vital link between donors and local needs**, connecting people with causes, and enabling individuals and organisations to achieve far more than they ever could by themselves.

£562,205

Awarded to 285 local projects –
‘funds for today’

£5,676,625

In our Community Capital Fund –
‘funds for the future’



Dear Supporter

It is with great pleasure that I can report another successful year for the Berkshire Community Foundation as it approaches its 25th Birthday. The trustees and staff are proud that their continuing commitment to the efficient delivery of philanthropy throughout the county has again been reflected in a continued high level of grant-making (during the year we passed the £6 million mark of grants awarded over the life of the Foundation), as well as a robust increase in our Community Capital Fund.

The Foundation prides itself in its broad knowledge of worthwhile and sustainable community-based voluntary groups and continues to provide local philanthropists with the ability to connect with and support such groups.

In this period of major economic challenge, with increased difficulty in funding threatening the very survival of many admirable groups doing important work in their community, the generous and philanthropic nature of our many long-standing and more recent supporters from across Berkshire has shone through.

On behalf of everyone at the Foundation and indeed of all those who benefit from its grants, I am very glad of this opportunity to thank you most sincerely for your support.

**Finally, I think a toast to the next
25 years is in order!**

Yours sincerely



Richard Griffith-Jones, Chairman



Andrew Middleton, Chief Executive of BCF meets with Richard Griffith-Jones, Chairman, to plan future initiatives



Patron

Panasonic UK Ltd.

President

The Hon. Mrs Bayliss JP
(Lord Lieutenant The Royal
County of Berkshire)

Honorary Life President

Sir Philip Wroughton KCVO DL

Vice Presidents

Ian Campbell

Christine Gabriel

Jane Wates OBE

Trustees

Richard Griffith-Jones,
Chairman

Peter Mason, Vice Chair and
Chair of Marketing and Fund
Development

Ray Tapken, Vice Chair and
Chair of Grants

Gordon West, Treasurer

Chris Barrett

Clr. May Dodds

Kelly Hales

John Horsey

Ramesh Kukar

Richard Nevill

Sue Ormiston

Hugh Priestley

Richard Rand

Gordon Storey DL

Dick Taylor

Susie Tremlett MBE, Vice Chair
of Grants

Emma van Zeller

Rev. Allen Walker

Jane Wates OBE

Christine Weston JP DL



BCF and Blagrave Small Grants Fund supporting...



Wokingham Mencap

£5,000

p.a. awarded for 2 years,
January 2010

“Thank you for the wonderful work, you make a real difference.”

Parent, Wokingham Mencap

Wokingham Mencap is a local charity working with people with learning disabilities. It aims to improve the lives and opportunities of children and adults with a learning disability, and their parents and carers. Wokingham Mencap runs a siblings group for children aged 8 - 13 years old, brothers and sisters of a disabled child.

The focus of the Siblings Activity Group is to provide a fun, social environment, where children and young people can spend time away from the “ups and downs” of life with a disabled brother or sister. Activities include art and crafts, drama, pool, table tennis, group games, hide and seek and various other activities.

The grant from the Blagrave Small Grants Fund was spent on venue hire, staff, activity costs, refreshments, stationery, publicity and management in order to expand the sibling club and an additional ‘taster’ event was run.

BCF Quick Response Grants Supporting...



Five A Day Market Garden West Berkshire

£220

awarded December 2009

“Your fast response has really helped us to get 5 A Day Market Garden up and running. We will recommend you to other voluntary organisations.”

Pam Goddard, Project Coordinator

5 A Day is an innovative, community supported agricultural project which aims to engage the rural and urban community in accessing healthy, naturally grown produce. Aimed at people of all ages and all abilities, it promotes the physical, mental and social benefits of horticulture. Located in a walled garden at The Street, Englefield, its vision is to offer opportunities for people to learn about their food, where it comes from and how it is grown in a natural way, working in harmony with wildlife and the environment.

The project's garden was in need of some new seating to replace the old, second hand benches in order to offer an improved and more comfortable learning experience for both learners and volunteers.

Grassroots Grants – we're nearly there!

Berkshire Community Foundation is 2 years into the 3 year Government funded programme called 'Grassroots Grants' and has already raised nearly £800,000!

The Grassroots Endowment Match challenge for Berkshire allows donors to receive an extra £1 from the Government for every £1 they donate. The resulting funds will be a key element in the **sustainability** of the smallest, volunteer-led organisations which are directing their energies to the particular challenges they see in **their local community**.

Our target was to raise **£803,000** by March 2011 – and thanks to an unprecedented response from the people in our community we have nearly made our target, a year ahead of schedule.

In addition, we have awarded over **£926,000** in grants for small community groups.

Local company, Foster Wheeler, the international engineering, procurement and construction contractor, has contributed to the **success** of the Grassroots programme with a donation of £90,000 which has been match funded to create the **Foster Wheeler Energy Grassroots Fund**. The Fund awards grants to groups supporting the elderly, children and young people and those with disabilities.



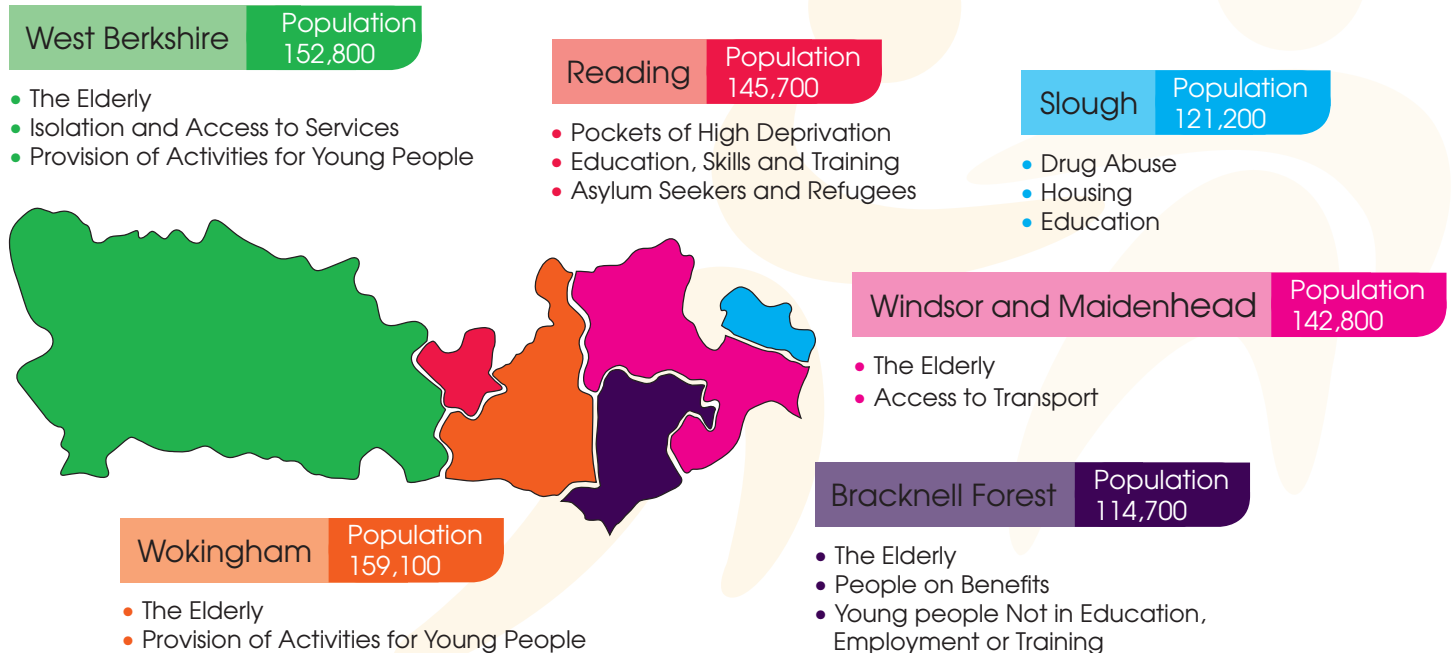
“Foster Wheeler has been able to support and make a difference within our local community by making grants through the Berkshire Community Foundation to local voluntary organisations who would not have had access to such grants under normal channels of fundraising. We are proud to be associated with and support the Berkshire Community Foundation’s commitment of ‘helping ordinary people do extraordinary things’.”

Marchien Smit Chairperson, Foster Wheeler UK Charities & Sponsorship Forum Foster Wheeler Energy Limited

The Foundation's Hidden Need Survey

“Whilst many people believe **Berkshire** is an affluent area, each **unitary authority** faces a number of **real** and, sometimes, **hidden problems**. The Foundation's **Hidden Need Survey** highlights the **key areas of concern** in each of the areas. This is important because an in-depth knowledge of the **high levels of deprivation** that exist **within Berkshire's six unitary authorities** will better inform our grant making policy.”

The Hon. Mrs Bayliss JP, Lord Lieutenant The Royal County of Berkshire and President of Berkshire Community Foundation



BCF and Grassroots Grants supporting...



**DisAbility Matters
Slough**

£5,000

awarded Autumn 2009

“This fund was the best thing that ever happened to us. It’s helping to keep DisAbility Matters alive.”

Margery Hitchman, Chairman, DisAbility Matters

DisAbility Matters is a voluntary run communications and information centre, self-advocacy and peer support group for people with disabilities. They run arts and craft activities for the benefit of the members. This grant was awarded to support a 12 week programme to include jewellery making, painting, making postcards and model making, together with an educational trip to an arts venue for the members.

The activities of the group provide a much needed and appreciated social contact which helps to combat the feeling of isolation experienced by some members. The craft activities provide a form of self expression and a sense of achievement in the completion of a project as part of the programme.

Giving Through the Foundation

If you feel inspired by what you have read, why not direct your charitable giving through the Foundation?

Set up a Named Fund

A Fund in your name gives you the opportunity to choose causes and projects that you care about most. A Sustainable Fund starts at £25,000, the income being used to award grants, whilst an Immediate Fund starts at £10,000 per annum.

Support an Existing Fund

Select a fund which matches your own interests – a geographical area fund, or one supporting the elderly, or Give A Child A Chance. There are no minimum contributions and every penny counts.

Establish an Acorn Fund

Start a fund of your own from a minimum of £1,000 and build it over the years. At £25,000 the fund begins to make grants and will support giving for generations to come.

Become a Berkshire 100 Club Member

The Berkshire 100 Club is a vehicle for businesses in Berkshire to give effective, targeted funding to grassroots organisations and projects in their local

communities. At an annual cost of only £1,200 per year, Berkshire 100 is about connecting companies who care with causes that matter.

Consider Leaving a Legacy

For many people, this is the best opportunity to make a substantial gift. BCF offers a simple and practical way to support future generations in the local community in which you have lived and worked.

Provide Sponsorship or In Kind Support

Opportunities for local companies to link with community projects through sponsorship of events or publications.

Gift Shares, Land or Property

Donating gifts of land, shares or property can be one of the most tax effective ways to give money to the Foundation.

Commit to Payroll Giving

A simple way to donate, allowing employees to give from their pre-tax salary each month and providing them with a valuable link to their local community.

Become a Friend

Our Friends are regular donors, supporting the work of the Foundation by contributing anything from £120 to £1,000 per annum.

Visit localgiving.com

localgiving.com is unique as it enables you to donate online to local charities and community groups. All groups are independently vetted by BCF in a process that has been approved by the Charity Commission, so you can give with confidence that your money will be well spent.



Funds with the Foundation

Our concept at the Foundation is simple; we provide the means for individuals and organisations to establish their own charitable 'funds', enabling them to support the causes they care about most.

Funds for Today

Immediate Impact funds allow individuals and companies to make an annual donation year on year; supporting the needs of the community in the here and now.

NEW Berkshire Community Foundation Staff Giving Fund

Supports projects chosen by staff who donate through payroll giving.

Blagrove Small Grants Fund

Targeting support for the elderly, children with disabilities and special needs, injured or disabled from sports and the sick.

Business Objects Fund

Focuses on providing access to education for vulnerable children and youth. Specifically, projects related to Core curriculum subjects e.g. Literacy, English language, Maths and Science and Technology skills.

NEW The Kaye Family Fund

Projects which improve facilities and activities for young people; and improving and developing facilities for leisure and recreation, particularly within the field of sport.

Peter Green Fund

Providing furniture for financially disadvantaged families.

Mars in the Community Fund

Grants for groups promoting Healthy Active Lifestyles, Environment, and Pet Welfare.

Sage Community Fund

Supports local people of all ages to nurture talent and / or provides life and employability skills which make a lasting contribution towards improving the quality of life of those it helps.

Funds for the Future

Sustainable impact funds create a long-term funding source for future generations. It is a donation that has a long lasting legacy for the community providing an annual income for grant making.

NEW Adam Clayton Fund

Providing bursaries to encourage young people from all walks of life to pursue a career in the medical profession.

Blagrove Fund for Older People

Supporting elderly groups.

NEW Blagrove 'Grassroots' Strategic Impact Fund

Targeting support for the elderly, children with disabilities and special needs, injured or disabled from sports and the sick in Reading and Slough.

Boehringer Ingelheim Fund for the Elderly

Supporting elderly groups.

Donnington Hospital Trust Fund

Supporting those of 'slender means' over the age of 60.

Henderson Family Fund &

NEW Henderson Family 'Grassroots' Fund

For the education and support of young people suffering from drug and substance abuse.

Herongate Fund &

NEW Herongate 'Grassroots' Fund

To support groups providing local services to alleviate need in West Berkshire.

The Gerie 'Grassroots' Fund

For general charitable purposes selected across Berkshire.

Lennox & Wyfold Fund for the Elderly

Supporting elderly groups.

Sara Lee Hardship Fund

For the relief of poverty of former Sara Lee employees and their dependents.

Slough Social Fund

Grants for any project/activity in the Slough/South Bucks area that is beneficial to the area.

Combo Funds

A 'Combo' Fund allows donors to make an immediate impact whilst building funds for the future.

Deloitte Fund & NEW Deloitte 'Grassroots' Fund

Promoting disability in sport, increasing skills and employability and improving the environment.

Foster Wheeler Energy 'Grassroots' Fund

Awards grants to groups supporting the elderly, children and young people and those with disabilities.

Peter King Fund

Supporting young disadvantaged people and other donor directed awards.

Prudential Fund

Awards for "making a difference in retirement."

Other Targeted Funds

The Foundation has a number of other funds which are targeted for geographical areas or specific areas of need.



Small Grants Programme

Grants for small community groups with funding from the Office of Third Sector totalling £926,000 over three years.

Endowment Match Programme

£1 to £1 match challenge programme with funding from the Office of Third Sector totalling £803,000 over three years.

Both the Small Grants and Endowment Match programmes cover the following unitary authorities in Berkshire:

Bracknell Forest

Reading

Slough

West Berkshire

Windsor & Maidenhead

Wokingham



The Give a Child a Chance Fund aims to help disadvantaged children and /or those with special needs.



Projects that encourage people to participate in sporting activities that unite communities and tackle social exclusion/isolation.



Foundation grants impacting areas of need amongst:

- The elderly
- Children and young people
- People with a long-term illness or disability, and their carers
- People with mental health needs
- Minority ethnic communities
- Those suffering from addiction

"The Berkshire Community Foundation has been invaluable in identifying projects that can contribute to making a difference to retirement in our local communities. It has helped us facilitate numerous projects which our employees support and engage in. We recognise that working in this way with local community groups creates huge benefits and in order to support such initiatives properly we set up a Prudential fund 10 years ago. Our close working relationship with Berkshire Community Foundation has contributed significantly to the success of our community based initiatives."

Helen Ellis, Head of Corporate Responsibility and Community Relations, Prudential UK & Europe.

BCF and Deloitte Supporting...



Bracknell Executive Job Club
£1,539

awarded January 2010

“Telephone interviews bring about their own challenges, in particular lack of visual feedback from the interviewer. The equipment allowed us to experience this and to practice being in this situation.”

Tony, Member Bracknell Executive Job Club.

The Job Club started in 2006 for the relief of unemployment, including assistance to the members of the club to find employment. The club offers free advice and training to unemployed individuals and includes specific training in skills such as CV writing, networking and interviewing techniques.

The organisation was awarded a grant of £1,539 from the Deloitte Fund to purchase telephone training equipment. Many potential employers now carry out telephone interviews with clients, and the grant was aimed at replacing old equipment used in the training. The job club runs a series of workshops, of which Telephone Techniques is an increasingly important part.

One of the first things covered is guidance as to how to answer the question “Tell me about yourself.” Those attending learn how to describe in one minute and over the telephone, who they are and what they can do for an employer. As a result, an appropriate response is immediately forthcoming when faced with such a question.

“Telephone interviews are becoming more common. The chance to practice with telephone kit that provides a realistic experience is invaluable. It helps with giving confidence in handling such interviews.” David, Member Bracknell Executive Job Club.

BCF Project Support Fund supporting....



**Bridge Trust
Windsor & Maidenhead**

£2,000

awarded in April 2009

“Improving the skills of our volunteers will ensure a consistent high standard of service delivery to our users. A larger pool of trained volunteers means that we are able to extend our services.”

Hilary Bone, Service Manager

The Bridge Trust reaches out to local young people by welcoming them to their project, re:charge, which provides a safe environment for those young people to be themselves but to be challenged and to be given opportunities to experience positive relationships and activities. It is a place where no one makes judgements and where friends are made and met as well as offering support, information and skills learning.

The Bridge Trust works with two groups - young people aged 11-18 and parents, especially young parents aged between 15 and 25, with their young children.

The grant from BCF paid for a total of 21 staff and volunteers to undergo training in effective listening skills and in child protection.

Consolidated Income and Expenditure Accounts as at 31st March 2010

	Unrestricted Income Fund Operating Fund £	Restricted Income Fund General Grants £	Restricted Income Fund Distributable Grant Funds £	Endowment Funds Capital Funds £	Total 2010 £	Total 2009 £
INCOME						
Funds generated						
Voluntary income Donations	171,695	176,228	(15)	165,772	513,680	418,348
Grants	-	-	405,896	226,844	632,740	347,298
Activities for generating funds	-	-	-	-	-	-
Investment income & bank interest	552	-	1,599	98,809	100,960	145,056
Charitable activities	-	-	-	-	-	-
Other incoming resources						
Transfer of engagement of Slough Social Fund	-	-	-	-	-	1,683,821
Total Income	172,247	176,228	407,480	491,425	1,247,380	2,594,523
EXPENDITURE						
Costs of Generating Funds						
Voluntary income:	(207,472)	-	-	-	(207,472)	(150,967)
Investment management costs	-	-	-	(21,333)	(21,333)	(12,336)
Charitable activities	-	(263,119)	(405,031)	(2,017)	(670,167) (see note)	(515,978)
Grants made	-	89	(45,723)	-	(45,634)	(110,959)
Grant administration & support	(40,846)	-	-	(45)	(40,891)	(24,073)
Governance costs	-	-	-	-	-	-
Other resources expended	-	-	-	-	-	-
Total Expenditure	(248,318)	(263,030)	(450,754)	(23,395)	(985,497)	(814,313)
Net (outgoing)/incoming resources before transfers	(76,071)	(86,802)	(43,274)	468,030	261,883	1,780,210
Transfers between Funds	80,964	58,812	-	(139,776)	-	-
Net (outgoing)/incoming resources after transfers	4,893	(27,990)	(43,274)	328,254	261,883	1,780,210
Gains/(losses) on investments	-	-	-	944,775	944,775	(934,313)
Net movement in Funds	4,893	(27,990)	(43,274)	1,273,029	1,206,658	845,897
Fund balances brought forward at 1st April 2009	21,609	125,922	7,749	4,314,687	4,469,967	3,624,070
Fund balances carried forward at 31st March 2010	26,502	97,932	(35,525)	5,587,716	5,676,625	4,469,967

Note: The grant figure includes a provision of £107,962 for payments agreed before the year end but paid afterwards.

Consolidated Balance Sheet as at 31st March 2010

	2010 £	2010 £	2009 £	2009 £
Fixed assets				
Tangible assets	3,973		3,374	
Investments	4,004,754		3,047,756	
		4,008,727		3,051,130
Current assets				
Debtors & prepayments	149,442		11,816	
Cash at bank & in hand	1,639,682		1,472,807	
	1,789,124		1,484,623	
Creditors				
Amounts falling due within one year	(121,226)		(65,786)	
		1,667,898		1,418,837
NET ASSETS		5,676,625		4,469,967
Capital Funds				
Permanent Endowment		1,860,505		1,458,725
Expendable Endowment		3,727,211		2,855,962
		5,587,716		4,314,687
Restricted Income Funds		62,407		133,671
Unrestricted Income Fund		26,502		21,609
TOTAL CHARITY FUNDS		5,676,625		4,469,967

These summarised accounts may not contain sufficient information to allow a full understanding of the financial affairs of the charity. For further information, the full set of accounts is available on request.

BCF Working with Give A Child A Chance supporting....



**Dingley Family and
Specialist Early Years Centre
Reading**

£2,000

awarded in July 2009

**“She loves the Sensory
room as it is a quiet
place away from the
other children where it
is always soothing and
calming.”**

Parent on her daughter's experience

Dingley Family and Specialist Early Years Centre provides a place where children, from birth to five years, with special needs and disabilities come to develop skills through therapeutic play. More than this, it is a place where their parents and carers are welcome, where they can make friends and share experiences. The grant from BCF was awarded to create a Sensory room aimed at enriching the lives of the children and helping to develop their key skills. A dull and dreary room was transformed into a calming sensory room, which has been used by all the children.

**“Without this grant we would be unable to provide the children with additional needs/
disabilities with the kind of experiences that not only enrich their lives but help to
develop key skills.”**

Jane Amin, Manager

Supporters 2009/10

Berkshire Community Foundation would like to say a huge thank you to our individual supporters who are not listed here, many office and fundraising volunteers, all of our supporters past and present, our trustees, and the members of our grants panels.

Each donation and every minute of your time is greatly appreciated.

Patron

Panasonic UK Ltd

In-Kind Donations

A special thank you to those companies who provide in-kind donations. These are incredibly important to the Foundation as they ensure that we can keep our costs as low as possible, meaning more funds are available for grant-making.

Goodman – Premises & Utilities
Iron Mountain Digital – IT & Backup Support
Verbatim – Call Answering

Organisations

Bracknell Forest Borough Council,
Community Development Foundation,
Community Foundation Network, Hurst

Golf Club, Lambrook School, Reading Borough Council, Rotary Club of Bracknell, Rotary Club of Pangbourne, Rotary Club of Slough, Royal Borough of Windsor & Maidenhead Council, Slough Borough Council, West Berkshire Council, Wokingham Borough Council

Companies

April Strategy LLP, Barrett Howe, Business Objects, Campbell Gordon, Centrica PLC, Clifton Ingram LLP, Deloitte, Foster Wheeler Energy Ltd, Grant Thornton LLP, Horsey Lightly, HSBC, Knight Frank LLP, KPMG, Limmatt Investment AG, Mars UK, McKay Securities, Nike Group Companies, Osborne Clarke, Peter Brett Associates, Reading Scientific Services Ltd, Redwood Technologies Ltd, RO Developments, Ruffer LLP, Sage UK Limited, Sara Lee, The Southern Properties Group

Charitable Trusts & Foundations

Bermuda Trust Company Limited, Boyton Charity, Dr Mortimer & Theresa Sackler Foundation, Donnington Hospital Trust, Englefield Charitable Trust, Haines Hill Charitable Trust, Henderson Charitable Trust, Helianthus Charitable Trust, Herbert & Peter Blagrove Charitable Trust, Illife Family Charitable Trust, Lennox and Wyfold Foundation, Male Family Charitable Trust, Mr G J Ward Charitable Trust, Pelham Charitable Trust, Peter

Samuel Charitable Trust, Robert McAlpine Foundation, Sir Richard Sutton's Settled Estates, Sobell Foundation, The Bertie Watson Foundation, The Payne-Gallwey Charitable Trust, The Tanner Trust

“Iron Mountain is proud to support Berkshire Community Foundation (BCF) and the outstanding work it does for the area. Iron Mountain's donation of a robust backup facility ensures that all of the Foundation's vital information is safe and secure.

Iron Mountain is pleased that its donation has given BCF the ability to immediately recover its data in the event of an IT failure, but also brings the organisation the ongoing reassurance it can always remain fully operational and continue its good work.”

Richard Ellis, Iron Mountain

The Team

Andrew Middleton, Chief Executive
Joanne Stokes, Development Director
Anita Cox, Office Manager
Pavlina Kozolkova, Graduate Intern
Kristina Luskacova, Graduate Intern
Cathy Clark, Grants Administrator
Rachel Hughes, Grants Manager
David Bolam, Grants Manager



Berkshire Community Foundation
Arlington Business Park
Theale, Reading
Berkshire RG7 4SA

**BERKSHIRE
COMMUNITY
FOUNDATION**

T: 0118 930 3021
F: 0118 930 4933
W: www.berkshirecf.org

Registered Charity Number 294220

Find Berkshire Community Foundation on Facebook or BerksCommFoundation on Twitter for the latest news and pictures.



quality accredited by
Community Foundation Network
to standards endorsed by the Charity Commission

Berkshire
Give a Child a Chance

Community
Foundation
Network



Designed and Printed by Conservatree 0845 450 4301
This document is printed on 100% recycled paper,
50% of it being from Post Consumer waste.